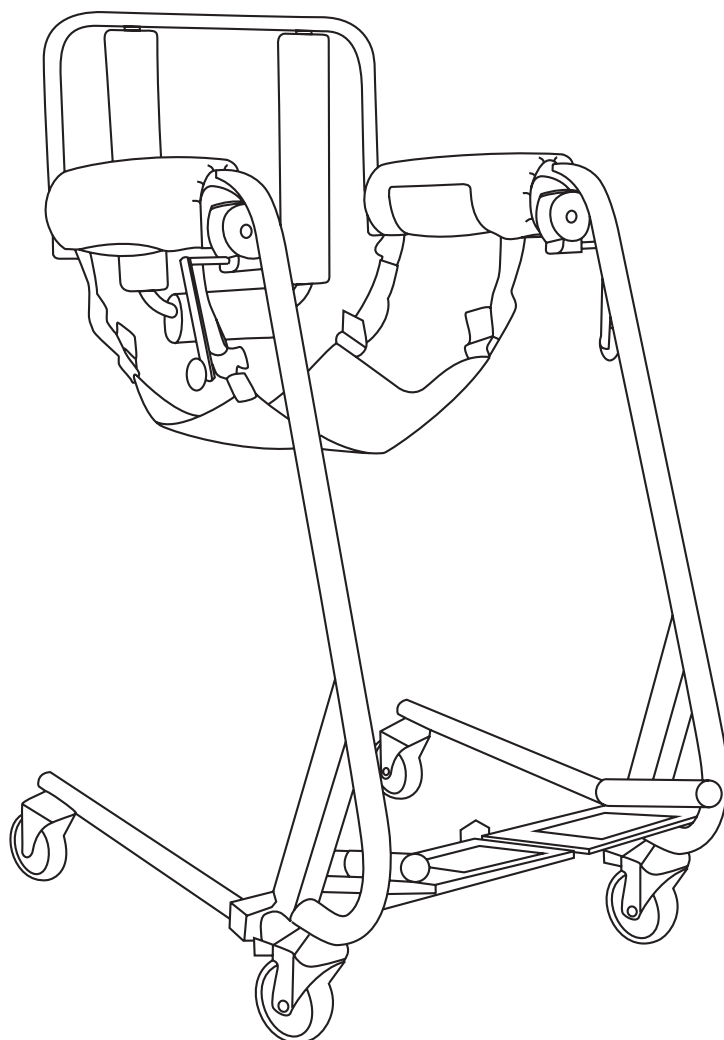


Accessibility At Its Best

**BodyUP**<sup>®</sup>  
EVOLUTION THE CONCEPT OF BEING LIFTED

**Wheelchair personal lift**  
**USER GUIDE & WARRANTY TERMS**



 **Veziris**  
HEALTHCARE

# BodyUP<sup>®</sup>

EVOLUTION THE CONCEPT OF BEING LIFTED

Dear Customer,

Thank you for your confidence in purchasing our product.

You have just acquired a safe, economical, eco-friendly and multiple purpose solution aid for your daily needs.

To use this aid optimally, we ask you and any other users to read the instructions carefully.



## Contents

General warnings & safety notes / Warranty & product liability	4
Purpose	5
Product Overview	6
Delivery – Installation	7
Operation	8
Maintenance and Repair	9
Technical Details	10
Spare Parts	11

## General Warnings and Safety Notes

**Body Up Evolution** has met the standards of the following bodies:

### **CE (European Conformity)**

and is identified with their respective logos.

The Production is subject to continuous quality control.



Body Up Evolution can be loaded to max. weight 100 kg (BU1000 model)  
and 140 kg (BU2000) model.

The manufacturer does not recommend that **Body Up Evolution** be used in the following situations:

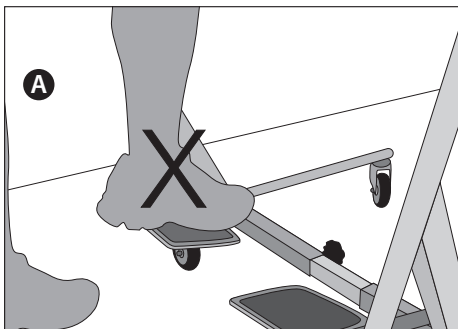
- Lifting a person from the ground.
- Outdoor Activities.
- Use at the stairs.

### **CAUTION**

Before each use of the Body Up evolution the lifting straps should be checked for damage to material.

Damaged straps must be replaced by your local dealer.

Do not step with force on the footrests (A)



Failure to follow recommendations and safety notes in this user guide will exclude the manufacturer from any liability of arising damage to persons, property or animals.

## Warranty and product liability

**Body Up Evolution** is guaranteed by **Vezeis HealthCare** and becomes effective on the date of purchase:

- 1) Frame and wheels - 5 years
- 2) Gear - 1 year
- 3) Transfer (canvas) seat - 1 year
- 4) Straps-1 year (with proper usage, explained in this user's manual)
- 5) Pads - 1 year (with proper/regular cleaning)

Only original equipment and accessories should be used. When neglect and/or repairs through non authorized persons occur, any guarantee of the **Body Up Evolution** and its components are rendered invalid.

Product liability on the part of the manufacturer

(**Vezeis HealthCare** - M&E Vezeis OE, Iraklitou 119-121, Halandri, Athens) is excluded in these cases.

## Purpose

**Body Up Evolution** is a safe, economical, eco-friendly and multiple purpose solution aid for use in home, hospital care, elderly homes, etc.

## Respect

Body Up Evolution has been especially designed to provide dignified patient transport, whilst simplifying caregiver requirements.

## Its “green”!

The **Body UP Evolution** does not require any batteries or charging; it is eco-friendly!

## No more barriers to one’s daily life

Access to the bathroom, shower or toilet is easier than ever.

The possibility of transfer of a patient to a suitable car, van, etc. will expand the world that the patient can access.

## Money saver

**Body Up Evolution** takes the place of:

a “power lifter”,

a commode/seat,

a bath/shower seat,

and provides:

car/van access,

a versatile home/facility wheelchair,

and much, much more.

## “Patient-friendly” design

**BU’s** frame colour and shape “rests” the eye and makes its presence very discreet when not in use.

## Portable

When it is disconnected into two pieces for transport, the user can enjoy **Body Up’s** benefits elsewhere as well. True mobility for many patients who do not currently have that option is now possible.

## Limited service required

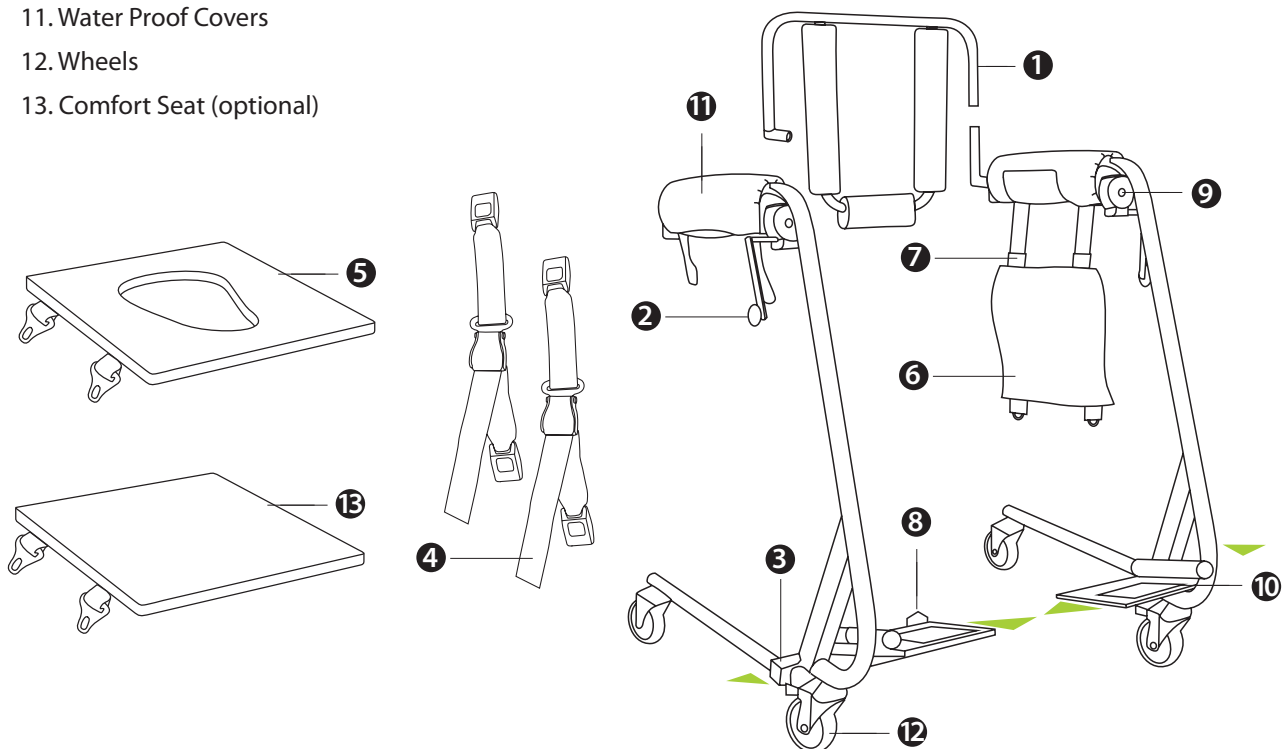
**Body Up** does not breakdown; it won’t require new batteries or circuit boards.

A yearly maintenance check by an approved organization is recommended by the manufacturer - with a visual check of all parts - especially the straps and the gear mechanism.

Of course, the customary cleaning and sanitizing of pads, seats, etc. will be necessary as required for each user.

## Product Overview

1. Back Rest
2. Lifting Levers
3. Outer Width Adjustment
4. Stabilization Straps (optional)
5. Bath Seat (optional)
6. Transfer Seat
7. Lifting Straps
8. Inner Width Adjustment / Disconnection point
9. Lifting Mechanism
10. Foot rests
11. Water Proof Covers
12. Wheels
13. Comfort Seat (optional)



## Delivery / Installation

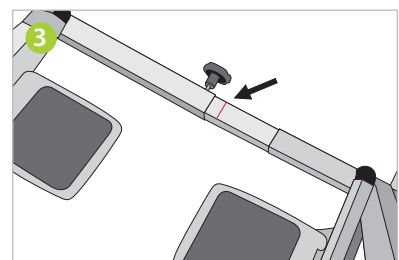
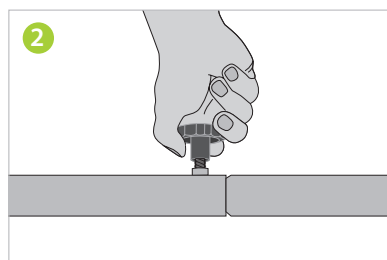
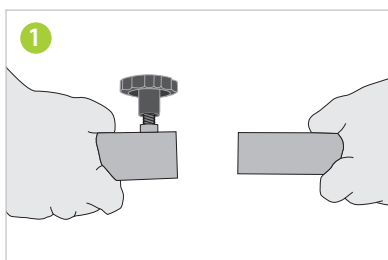
Each Body Up Evolution is delivered in a substantial box container.

After unpacking, the parts can be easily assembled as follows:

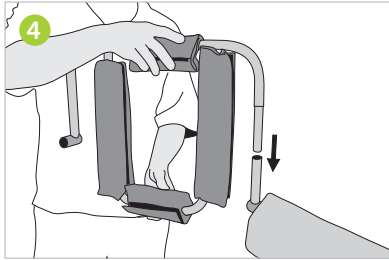
**1,2.** Connect the two frames of the Body Up Evolution (8)

**3. Caution** – Inner width is adjusted according to the body type of each user.

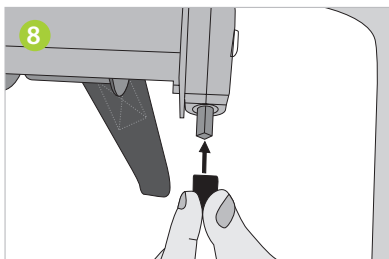
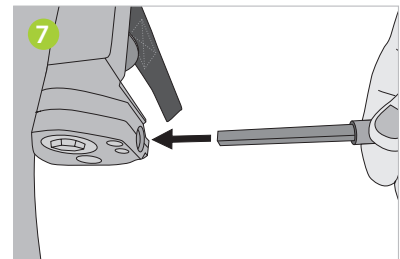
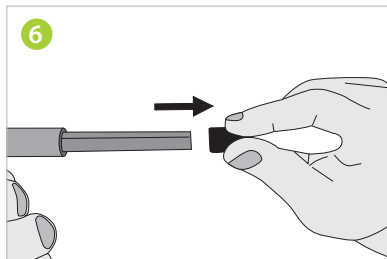
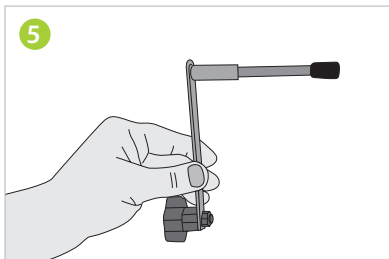
Do not exceed the limit that is marked on the frame, in any case!



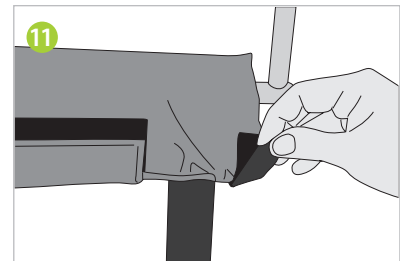
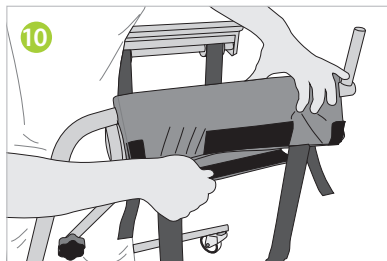
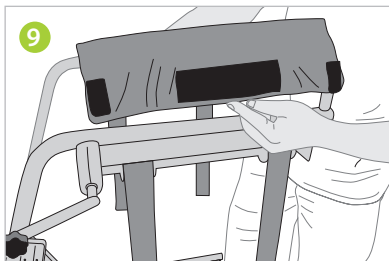
4. Connect the back rest (1), to the left frame.



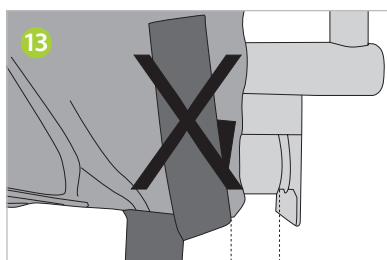
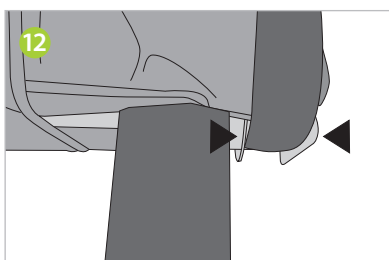
5, 6, 7, 8. Attach the lifting levers (2) to the lifting mechanisms (9)



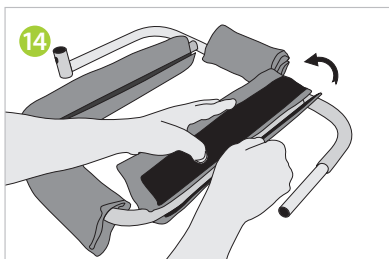
9, 10, 11. Adding the covers on the frame arms



Caution - 12, 13. The proper way to add the cover.



14, 15. Adding the covers on the back rest.



## Operation - Lifting

1. Gently move the lying patient and place the transfer seat (6) under the thighs at the lower end of the buttocks.

**\*Optional:** Use the stabilization straps (4) in order to secure the patient on firmly the transfer seat.

**Available demo video:** <http://www.bodyupevolution.com/en/stabilization-straps-bu-03/>

2. Holding the patient from the back, help him sit on the bed with the transfer seat (6) attached to him, and with his back straightened in a vertical position.

*\*Make sure that the patient sits vertically on the bed and the four metal points of the seat that you are using, are visible.*

3. Open or completely remove the back rest (1) and roll the Body Up Evolution backwards so that the frame goes under the bed while slightly lifting the patient's legs and place them on the footrests (8).

4. Close and secure the back rest (1).

5. Join the transfer seat (6) with the lifting straps (7) hanging from the Body Up Evolution in the same manner as you would secure car seatbelts.

6. Finally, turn the left and right lifting levers (2) to lift the patient from the bed.

**Caution** – Make sure that the lifting straps (7) are vertical to the seat during the lifting process (A)

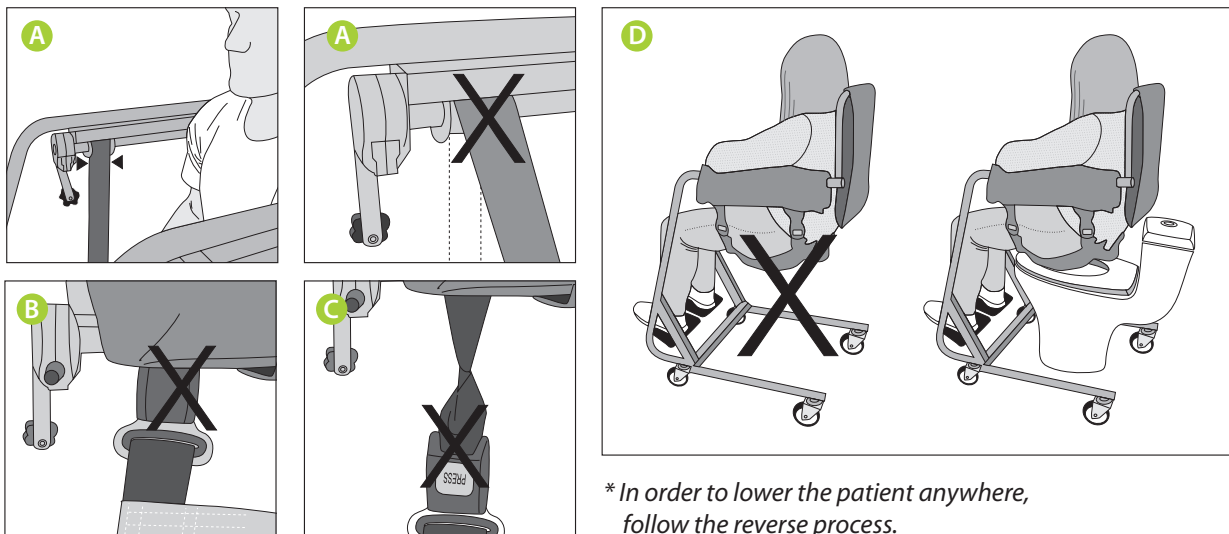
– Do not lift the strap too high as you may brake the buckle (B)

– The “press” sign should always face on the exterior side of Body Up Evolution (C)

– The Bath Seat (5) accessory, has not been designed for a long-distance transport nor for someone sitting for a long period of time on it.

It is limited in the use of lifting, transport and positioning the patient to:

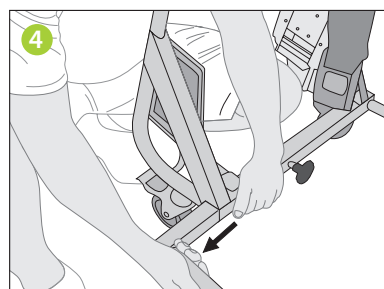
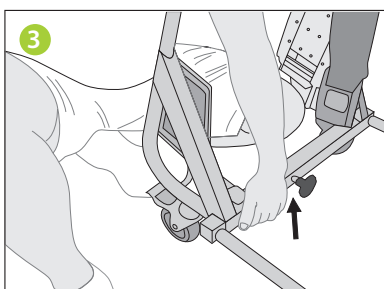
a. Other wheelchair b. Toilet c. Stool (D)



## Destination options, optional items and notes.

### A. Wheelchair.

**3,4.** Make sure to adjust the width of the outer frame (3) of the **Body Up Evolution**, up to a point that can embrace the wheelchair **BEFORE** the lifting process.



### B. Car.

Front seat of the vehicle is suggested. Suggested optional item: The comfort seat (13).

### C. BATH & TOILET

Suggested optional item: The water-proof bath seat (5)

**FOR MORE:** [www.bodyupevolution.com](http://www.bodyupevolution.com)



## Maintenance and Repair

Before each use of the Body Up Evolution the lifting straps (7) should be checked for damage to material. Damaged straps must be replaced by your local dealer.

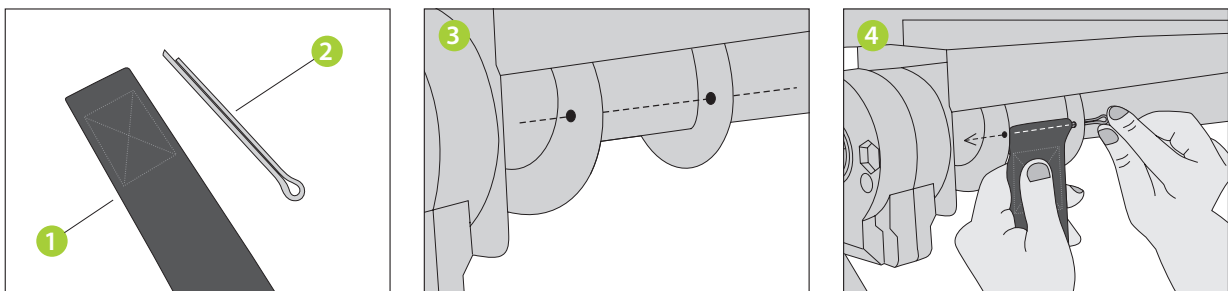
Failure to follow recommendations and safety notes in this user guide will exclude the manufacturer from any liability of arising damage to persons, property or animals.

### Instruction for Strap attachment to rollers on frame arms

**1.** The strap has been folded on itself and sewn to create a loop for the cotter pin to pass through, to enable fixing to the drum on the arm of the **Body UP Evolution**.

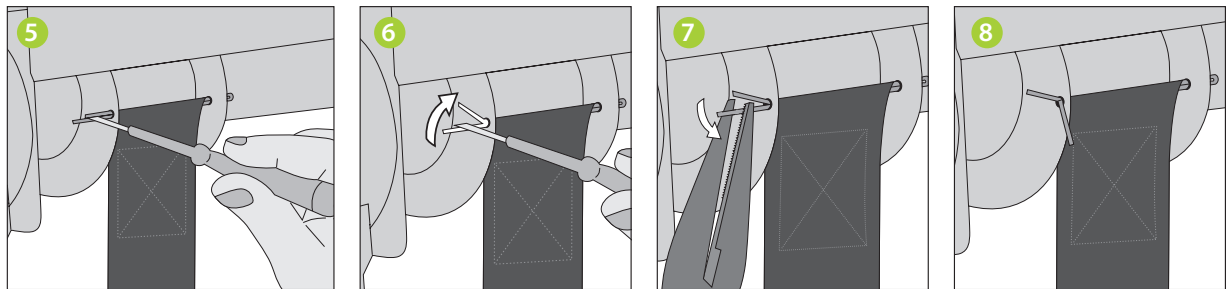
**2.** This shows the split pin used to fasten the strap to the **Body UP Evolution**.

**3.** The drum into which the cotter pin and loop for the strap are secured. Note the two holes drilled on the frame of the drum where the cotter pin will be mounted.



**4.** Insert the cotter pin into the hole on one side of the drum frame to mount the cotter pin. Then insert the cotter pin into the loop in the strap so that it can be inserted in to the second hole in the drum frame. Note: Ensure that the sewn edge of the loop is facing the drum.

**5, 6.** With the cotter pin fully inserted into the second hole in the drum frame and protruding past the hole, insert a screwdriver to split the ends of the cotter pins. This will ensure that the cotter pin and the strap are secure within the drum frame.



**7.** Further secure the cotter pin, by using common pliers

**8.** Pin has been threaded through the frame and strap loop and cotter pin end split

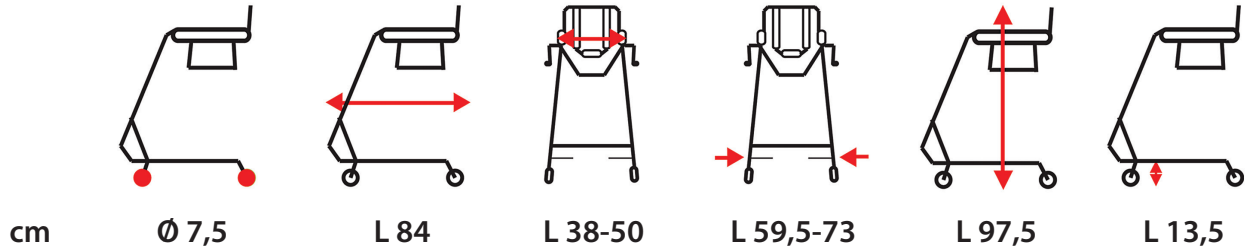
The strap end is securely mounted onto the drum frame and can now be wound onto the frame either by clockwise or anti-clockwise revolution of the handle at the front.

Repeat this process for all four straps attached to the Body UP frame.

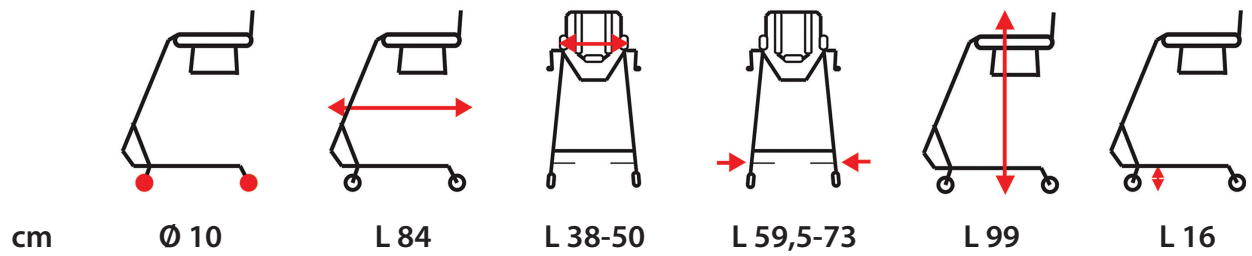
Make sure to wind both right and left Body UP handles in the same direction to wind the straps onto their respective drums.

## Technical Details

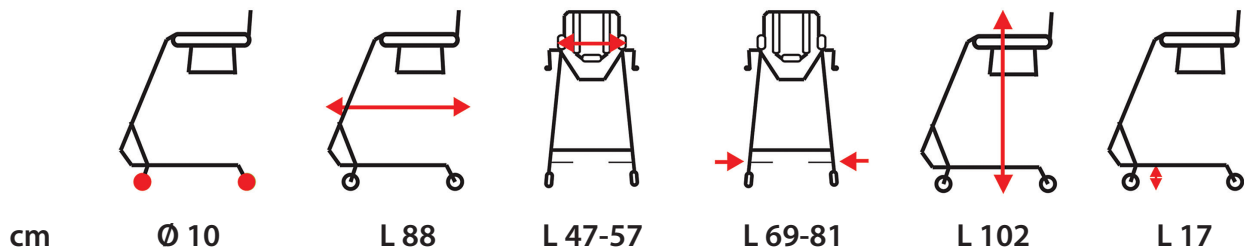
**BU-900** with smaller wheels | Max weight capacity 100kg



**BU-1000** Max weight capacity 100kg



**BU-2000 Heavy Duty** | Max weight capacity 140kg



### CAUTION

Specifications subject to change.

## Spare Parts

Only original equipment and accessories should be used.

When neglect and/or repairs through non-authorized persons occurs, any guarantee of the **Body Up Evolution** and its components is rendered invalid.

Product liability on the part of the manufacturer (Veziris HealthCare) is excluded in these cases.

For questions about spare parts or accessories please contact your local dealer or the

**Veziris HealthCare service.**

**Phone: +30 210 6852381.**

### **In environmental protection:**

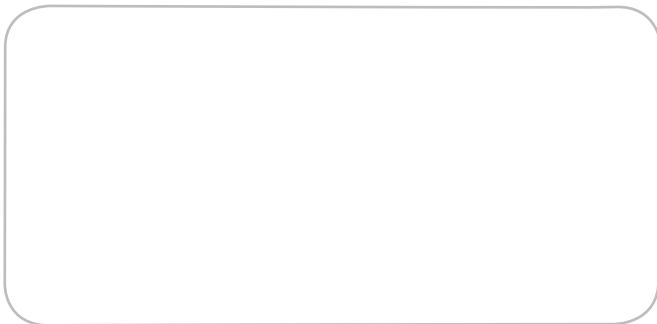
All packaging materials are recyclable.

The cardboard packaging is designed to be recycled as waste paper. Therefore, paper only is used as a filler. All plastic packaging films are of PE and can be low pollution burned or recycled.



[www.bodyupevolution.com](http://www.bodyupevolution.com)

Exclusive Distributor



Body up Evolution is manufactured in Greece and is exclusively distributed by M&E Veziris